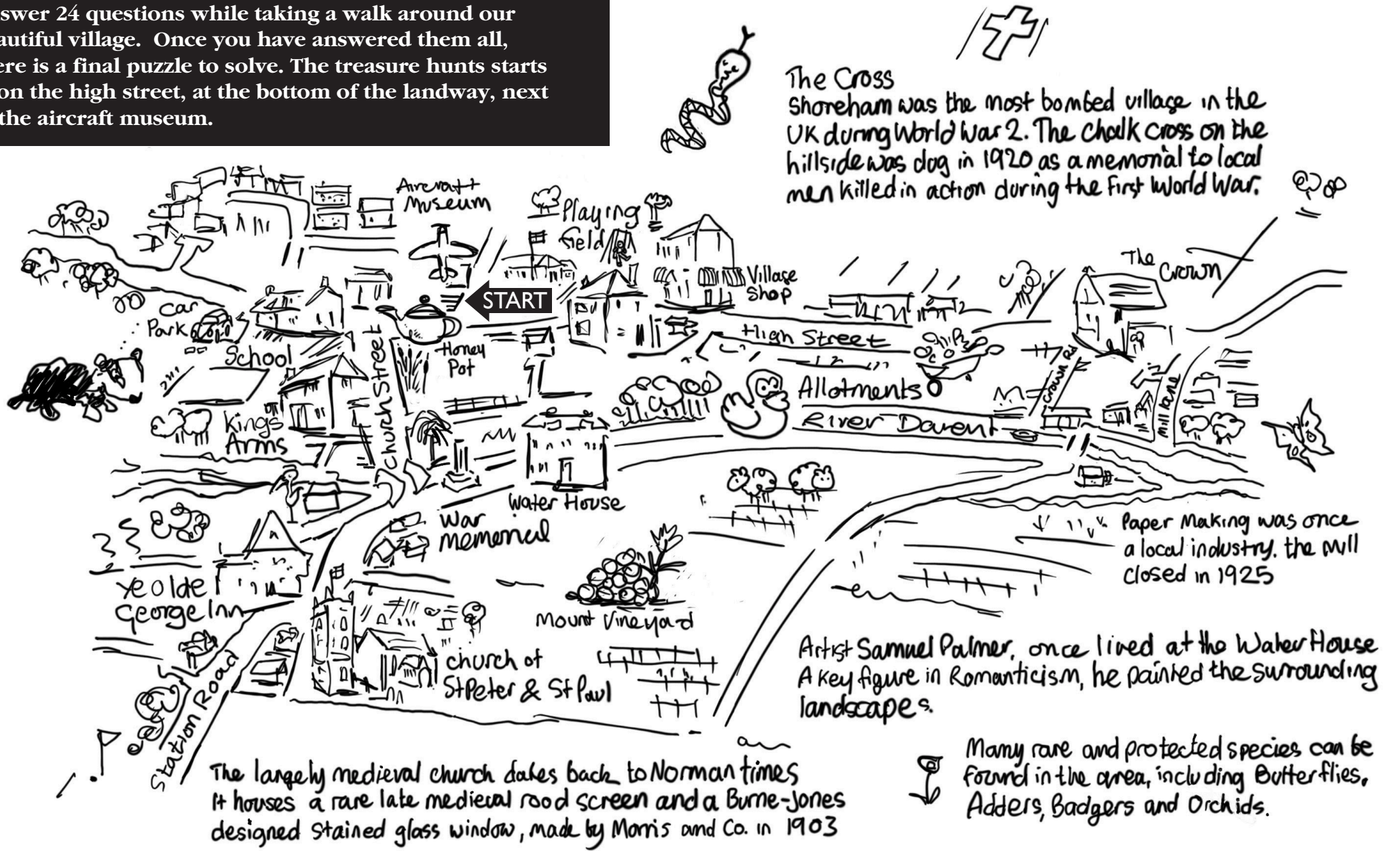


# SHOREHAM TREASURE HUNT

Answer 24 questions while taking a walk around our beautiful village. Once you have answered them all, there is a final puzzle to solve. The treasure hunt starts at on the high street, at the bottom of the landway, next to the aircraft museum.



The Cross  
Shoreham was the most bombed village in the UK during World War 2. The chalk cross on the hillside was dug in 1920 as a memorial to local men killed in action during the First World War.

Paper Making was once a local industry. the mill closed in 1925

Artist Samuel Palmer, once lived at the Water House  
A key figure in Romanticism, he painted the surrounding landscapes.

The largely medieval church dates back to Norman times  
It houses a rare late medieval rood screen and a Burne-Jones designed stained glass window, made by Morris and Co. in 1903

Many rare and protected species can be found in the area, including Butterflies, Adders, Badgers and Orchids.

1. With the museum on your right and the road in front of you, turn right and walk along the pavement. Which of these cottages is another colour as well as white?

---

2. Continue along a few steps and look at the cottage across the road. Can you spot a kitchen utensil in its name?

---

3. From here, continue to the end of the pavement and cross the road to the corner. Look carefully at the very old building here. Who is missing?

---

4. Continue on to the car park. What are there 5 of here?

---

5. Leave the car park and retrace your steps back to the corner. Turn right here. Water birds and voles might make their home in this former art school.

---

6. Continue a little further down the road. What was founded in 1841?

---

7. Continue down the road looking carefully at the houses on both sides of the road. Do you think the owners of this house were born in the 9th month of the year?

---

**BONUS** – See if you can spot two other houses on the hunt which are named after months of the year.

8. Continue. Did Noah live year once upon a time?

---

9. Continue. They're not on a shirt but on the Kings Arms sign and there are six of them.

---

10. Who's the happy chap at the Kings Arms?

---

11. Continue down the road crossing the bridge. Continue up Church Street. What type of bird might live behind the black door?

---

12. Continue up the hill. To the nearest 100, how old is the George pub?

---

13. Turn around and walk back down Church Street towards the river. Stop just before the bridge and see if you can spot a house that Aladdin may have visited?

---

14. Now turn to look at the war memorial and think about those who lost their lives. Which poor family lost 5 of its members?

---

15. Continue along the river path. For how long did Samuel Palmer live at Water House?

---

16. Continue all the way along the river path until you come to the cottages on the opposite bank. Miss who might you find rowing down the river?

---

17. Cross the footbridge. What might you not be able to eat with your chips here?

---

18. Walk along the path and turn left into Mill Lane. Which royal residence can be found here?

---

19. At the top of hill, turn left. Who was queen when the red piece of metal was put in the wall?

---

20. Turn left into Crown Road. Whose seat is there?

---

21. Walk down Crown Road. A tiny red and black creature might live in this house?

---

22. Retrace your steps back up Crown Road and turn left into High Street. Walk towards the shop. What kinds of lights might be found at Forge Cottage?

---

23. Carry on to the Village Hall. Which year was a good one for Shoreham?

---

24. Carry on to your starting place. Just before you finish, can you see which kinds of toys might have lived in one of these houses?

---

**Congratulations – you've finished!**

**Now see if you can find the word to solve the final puzzle:**

- The first letter of the answer to question 21
- The first letter of the second word of the answer to question 10
- Look at answer 23. If 1 is A, what is 3?
- The last letter of the first word of the answer to question 8
- The first two letters of the answer to question 24
- What letter in the alphabet come after the initial of the Queen found in question 19?
- Which letter appears 3 times in the answer to question 18?

**And the word is.....**